

S-1 & S-40 Transmission Lines: Rebuilds and Reroute

Construction Start: Q4 2024

Project Overview

As part of our commitment to provide safe, reliable service to our customers, Central Maine Power Company (CMP) will be upgrading our electric transmission system in your community beginning late 2024 and continuing into 2025.

Section 1 is a 23-mile 34.5kV transmission line that runs from Augusta Eastside Substation on North Belfast Avenue off Route 3 to Winslow Substation near Benton road, serving more than 7,700 customers. Built in 1929, the original transmission line needs replacement due to the age of poles, conductor, and crossarms; limited work clearances; and insulators that are prone to failure thus raising significant structural and reliability concerns.

Project Scope

The Section 1 Rebuild Project is comprised of two segments:

- Segment 1: from Augusta East Substation to McCoy's Substation in Vassalboro.
- Segment 2: from McCoy's Substation to Winslow Substation off Benton Ave.. In Winslow, a re-route onto Section 40 is under consideration at the Maine Public Utilities Commission. See *Re-Route Review*.

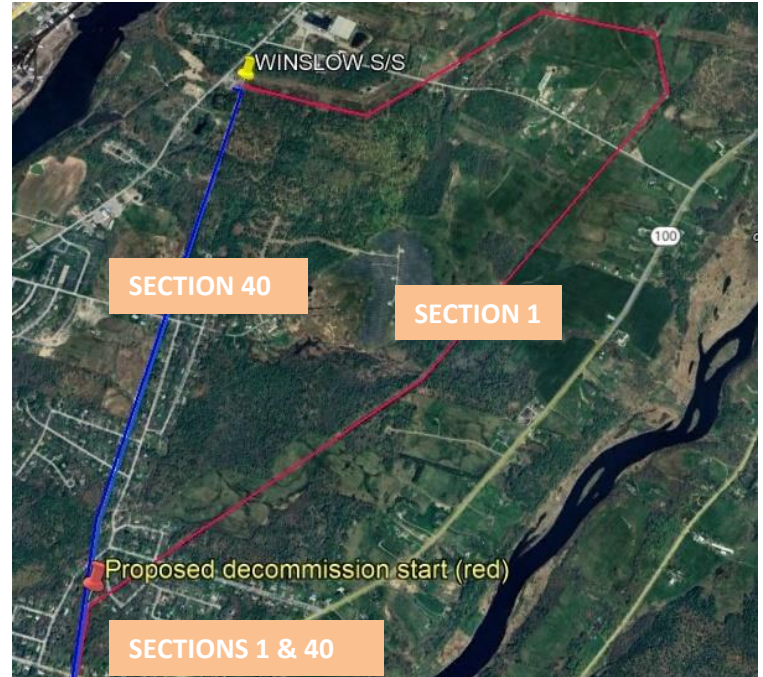
The Section 1 line consists of wooden structures that will be upgraded to include 462 monopole (single) light-duty weathered brown steel poles and 113 wooden poles that will be, on average, 10 feet taller. All new insulators, fiberglass crossarms, and conductor will be installed. The structures will be set on the existing line and the old ones will be removed.

Regulatory Approval

In July 2022, CMP filed a request with the Maine Public Utilities Commission (MPUC) seeking approval of its proposed Section 1 rebuild under a Maine law that requires PUC approval of any transmission line project forecasted to cost more than \$5 million. (maine.gov/mpuc Case number 2022-00244)

Also, the proposed transmission line rebuild was required to undergo a review of whether the identified need over the effective life of the upgraded line instead could be reliably and more cost effectively met using a nonwires alternative (NWA). No alternative was identified.

The MPUC has approved the Section 1 rebuild project from Augusta to Winslow south of Section 40. As of April 2024, the MPUC continues to evaluate the S-40 re-route proposal.



A re-route of CMP's Section 1 transmission line onto Section 40 is under consideration.

Section 40 Re-route Review

In Winslow, the current Section 1 travels across the Sebasticook River to Smiley Road and parallel to Route 100 until it loops near Heywood Road towards Winslow Substation on Benton Avenue.

During the MPUC proceedings, an alternative configuration was identified to re-route a portion of Section 1 (see red line on above image) to Section 40 in Winslow and decommission that part of Section 1. The re-routed portion of Section 40 (from Section 1) will be upgraded to improve service reliability in the Winslow area while reducing overall project costs.

The re-routed portion will include replacing the existing Section 40 poles with the same materials that are being used in the Section 1 rebuild, and double circuiting the Section 1 and Section 40 line on the same pole between Smiley Avenue and Warren Terrace. Section 40 travels from Vassalboro Substation off China Road in Winslow and parallel to the Sebasticook River then heads north over Route 100, Clinton and Smiley avenues. It continues parallel to Frankwood Drive and crosses Woodlawn Drive, Primrose Street and Roderick Road, and continues to the Winslow Substation on Benton Avenue.

FOR MORE INFORMATION

Project Information Line:

1.888.267.0831 and refer to Section 1

Email:

outreach@cmpco.com

Website:

cmpco.com/ourcompany/reliableservice



A light duty weathered brown steel pole.

Access

CMP crews will be accessing our transmission line corridor via roads where CMP has access rights or legal agreements with property owners or towns. CMP land agents from our Energy Land Management department will be reaching out to some adjacent landowners to acquire access rights.

Permits

CMP will secure all necessary permits for this project from the Maine Department of Transportation, Maine Department of Environmental Protection, U.S. Army Corps of Engineers, City of Augusta; Town of Vassalboro; the Town of Winslow, and the railroad.

Work Hours and Noise

Work activity periods will comply with town ordinances. Typical construction noise, including drilling, will occur. Abutters may hear heavy equipment (bucket trucks, cranes, and excavators) during construction activities.

Trees and Vegetation

Trees and vegetation will be trimmed or removed from border-to-border of the corridor to make room for the new line as well as reduce possibility of storm-related damages or outages. CMP may need to talk to landowners about trees outside the corridor that could pose a danger to the line.

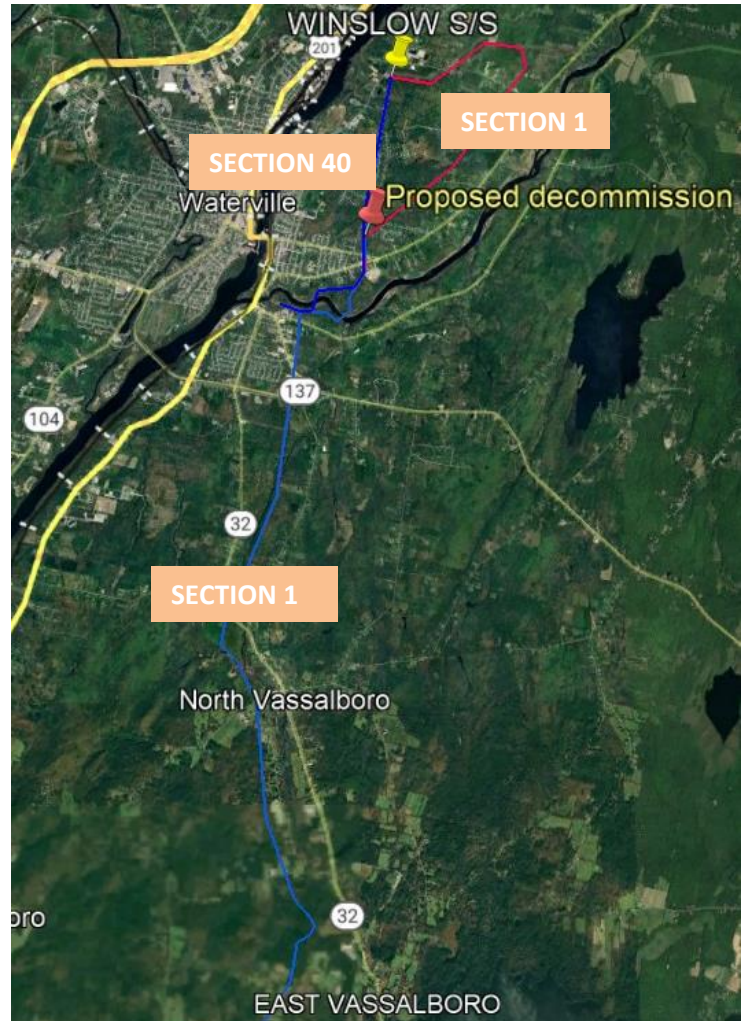
Timber ground mats will be used, especially in environmentally sensitive areas, to safely disburse the weight of construction vehicles and not disrupt the land below them.

Estimated Timetable

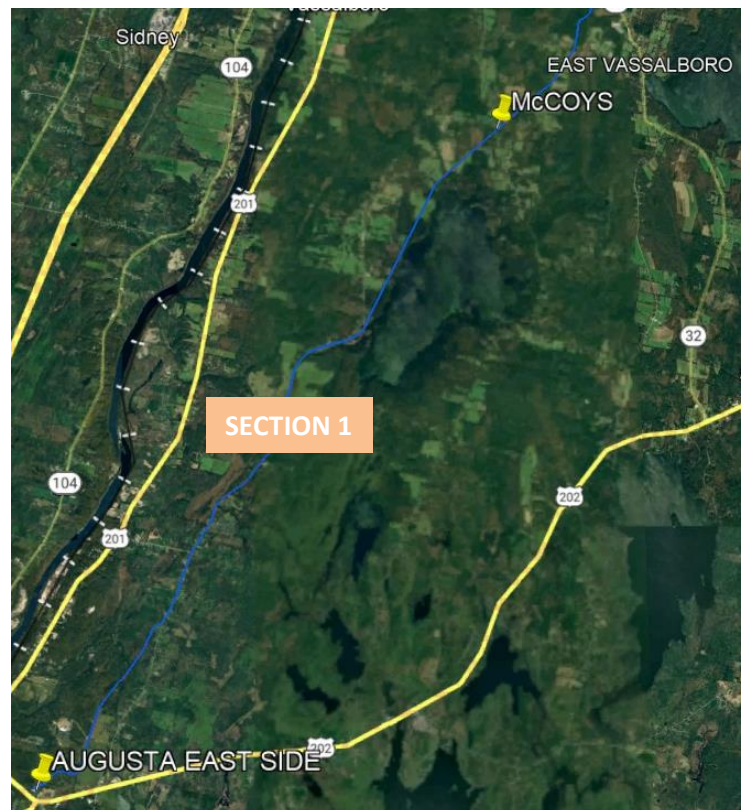
- **Construction Start:** Q4 2024
- **Completion:** Spring 2026

Benefit to Customers

- Improved reliability to meet customers' electricity needs



CMP's Section 1 34.5 kV transmission line from Vassalboro to Winslow, and Section 40 34.5 kV transmission line in Winslow.



CMP's Section 1 34.5 kV transmission line from Augusta to Vassalboro.