



**CENTRAL MAINE
POWER**

An AVANGRID Company

RELIABILITY UPGRADES Section 238A Rebuild

CONTACT

Project Information Line: **888.267.0831**

Refer to: **Section 238A (Biddeford)**

Website: **cmpco.com > Reliable Service**

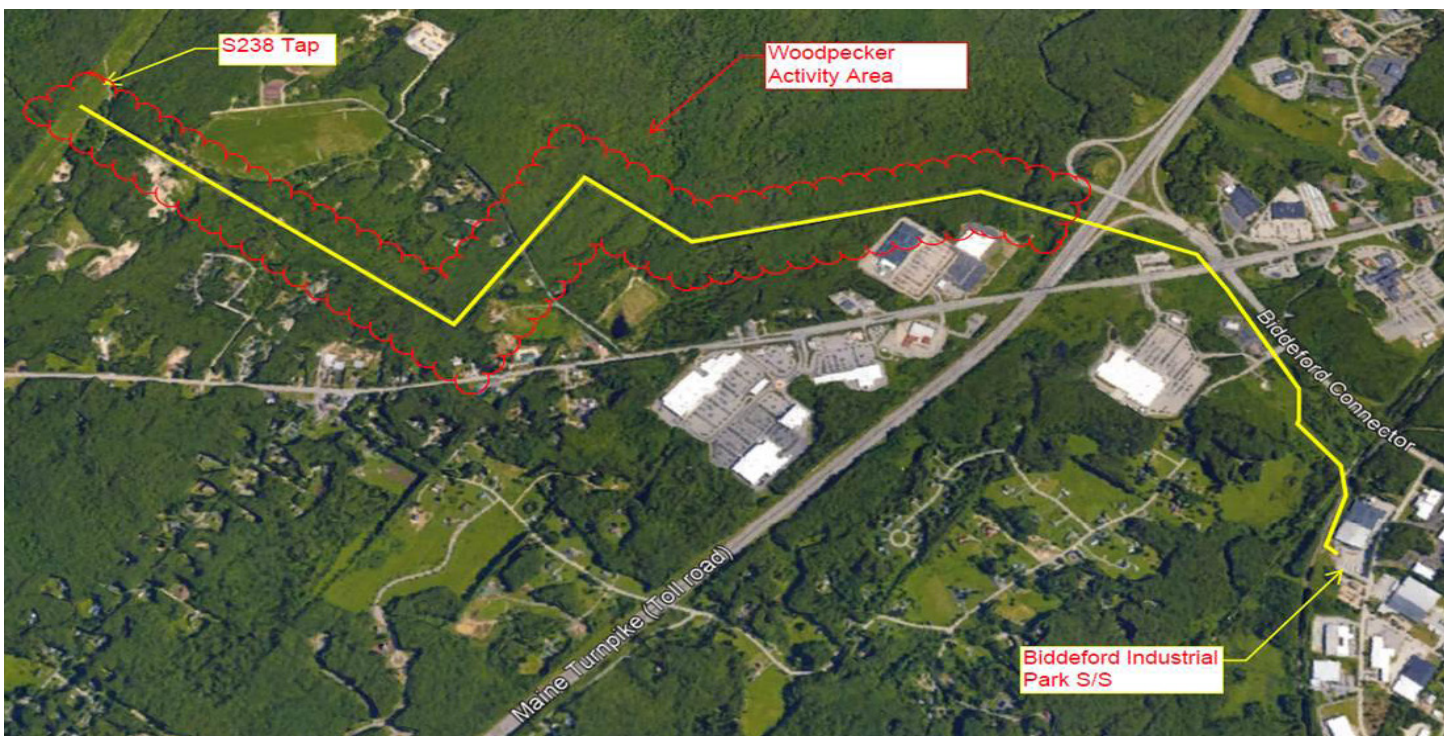
PROJECT OVERVIEW

As part of our commitment to provide safe, reliable service to all of our customers, Central Maine Power Company (CMP) is rebuilding a section of our transmission system in the Biddeford service area that has been severely damaged by woodpeckers. CMP is reaching out to neighbors along the line to ensure that all improvements are performed safely and with minimal disruption to their daily lives, the community, and the environment.

PROJECT PURPOSE AND NEED

The structural reliability of Section 238A, an approximate 3.5-mile 115kV transmission line that extends from Section 238 to Biddeford Industrial Park Substation, is being compromised by woodpeckers drilling holes and establishing nests in the poles. In spring 2019, five of the more high priority structures were replaced, and now 24 additional structures need to be replaced. Composite poles that are not susceptible to woodpecker damage, and stand about 10 feet taller, will be used.

Section 238A, originally built in 1990, is a radial transmission line that feeds 1,200 customers in Biddeford.



CMP will be replacing poles severely damaged by woodpeckers between 238 tap and the Biddeford Industrial Park Substation. No work will be done by I-95.



Woodpecker holes and nests in poles have impacted the stability of CMP's transmission line Section 238A in Biddeford.

PROJECT SCOPE

This project runs from the Section 238 tap to the Biddeford Industrial Park Substation on Biddeford Industrial Park Road. All structures that have been damaged by and are compromised by woodpecker holes will be replaced in the same locations with composite material poles. No road closures are required for this project.

ACCESS

All work for this project will be performed within CMP's existing right-of-way (ROW). CMP will travel down the corridor when at all possible however there are instances where we have worked with landowners to access the corridor through private land/driveways. Any access through private property is outlined in legal documents prior to use.

PROJECT FACTS

Municipality:	Biddeford
County:	York
Customers:	1,200
Permits:	Maine Department of Environmental Protection and U.S. Army Corps of Engineers

PROJECT FEATURES

- **Transmission Line:** New line will be built on the same centerline as the existing line, meaning almost in the same place.
- **Poles:**
 - New, taller wood poles will be placed in the corridor, with approximately 88 feet showing above ground as compared to the approximately 79 feet currently above ground.
 - Old poles will be removed immediately.
- **Right of Way (ROW) Clearing:** No clearing or trimming is required for this project.
- **Work Hours:** No work will be done in the dark. Construction noise will be present. You will hear heavy equipment as well as excavators during matting and pole setting activities.

BENEFITS TO THE REGION

- Improved reliability to meet customers' electricity needs.

ESTIMATED TIMETABLE *(subject to change)*

Construction Start:	September 2020
Estimated Completion/ In-Service Date:	December 2020